



STEP WITH CONFIDENCE



Safety Shoes | Safety Helmets
Safety Jackets | Safety Goggles | Coverall Normal & Fire Proof

About Us

Welcome to ARMEX, your trusted partner in safety solutions. We specialize in providing high-quality safety gear designed to protect workers in various industries. Our extensive product range includes Safety Shoes, Safety Helmets, Safety Jackets, Safety Goggles, and both Normal and Fire-Proof Coveralls. At ARMEX, we are committed to ensuring the highest standards of safety and reliability, offering products that combine durability with comfort. Our mission is to safeguard the well-being of professionals in challenging work environments by delivering superior protective equipment that meets and exceeds industry standards. Trust ARMEX for your safety needs and experience the difference in quality and protection.

CRAFTED
QUALITY,
BECAUSE
SAFETY IS
NON-NEGOTIABLE!



SAFETY SHOES



SAFETY HELMETS



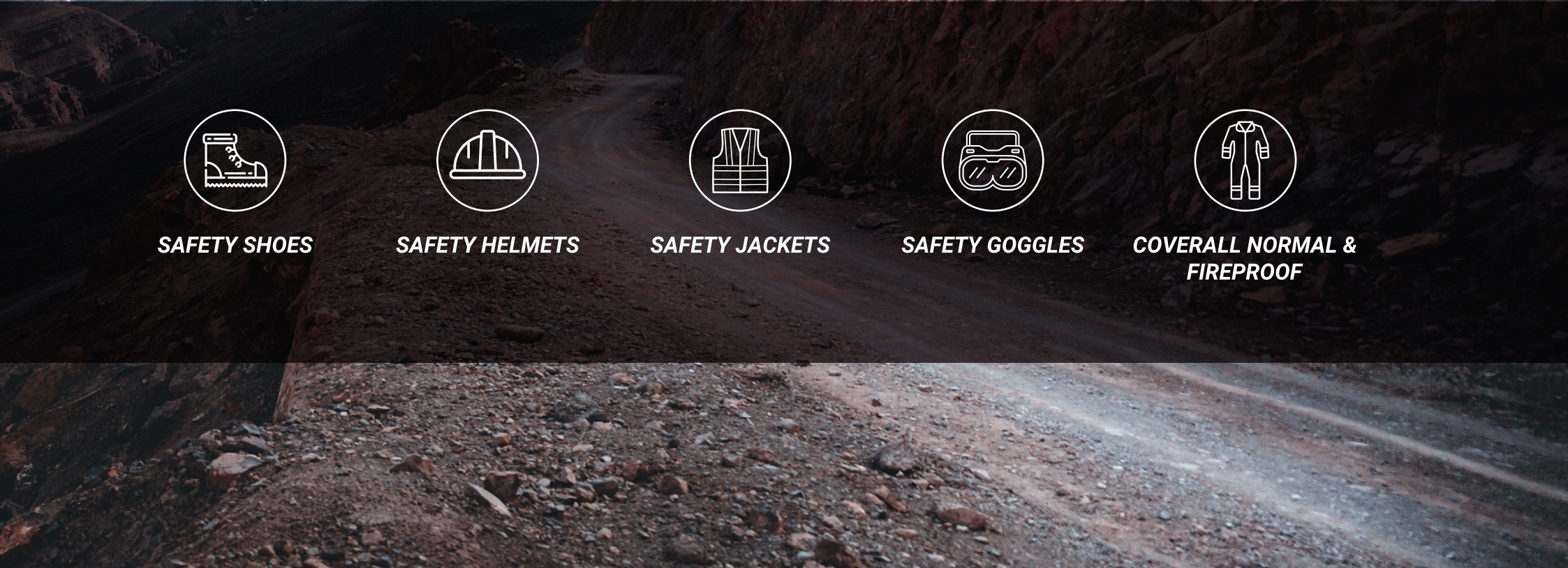
SAFETY JACKETS



SAFETY GOGGLES



**COVERALL NORMAL &
FIREPROOF**



SAFETY SHOES

A safety shoe is a type of footwear designed to protect the feet from various hazards in the workplace. These shoes are commonly worn in environments like construction sites, factories, warehouses, and other industrial or hazardous work settings. Safety shoes are designed to be comfortable, offering both protection and ease of movement for long hours. Proper fit is essential to ensure that workers are not distracted or hampered by discomfort, and the shoes should provide adequate support.



Series Name : ARMOR
Product Code : AASH-JO-502



Material : Leather Upper
Lining / Insole : High-Quality 3D Air Mesh
Toe Cap : Steel
Mid Sole : Kevlar Plate
Sole : PU Injection Sole
Standard : CE EN ISO 20345:2022 - S3
Colour : Beige
Sizes : 38-45
Type : Engineer/Staff



Series Name : MAX
Product Code : AMSH-JO-601



Material : Flyknit Upper
Lining / Insole : High-Quality 3D Air Mesh
Toe Cap : Steel
Mid Sole : Kevlar Plate
Sole : PU Injection Sole
Standard : CE EN ISO 20345:2022 - S1P
Colour : Black
Sizes : 39-46
Type : Engineer/Staff



Series Name : ZONO
Product Code : AZSH-JO-702-LACE-UP & 701-SLIP-ON



Material : Leather Upper
Lining / Insole : High-Quality 3D Air Mesh
Toe Cap : Composite
Mid Sole : Kevlar Plate
Sole : PU Injection Sole
Standard : CE EN ISO 20345:2022 - S3
Colour : Black
Sizes : 36-46
Type : Supervisor/Staff



Series Name : TOUGH
Product Code : ATSH-JO-802-LACE-UP & 801 SLIP-ON



Material : Leather Upper
Lining / Insole : High-Quality 3D Air Mesh
Toe Cap : Composite
Mid Sole : Kevlar Plate
Sole : PU Injection Sole
Standard : CE EN ISO 20345:2022 - S3
Colour : Black
Sizes : 37-46
Type : Supervisor



Series Name : TITAN
Product Code : ATSH-JO-302-H/A & 301-L/A



Material : Leather Upper
Lining / Insole : High-Quality 3D Air Mesh
Toe Cap : Steel
Mid Sole : Steel
Sole : PU Sole
Standard : CE EN ISO 20345:2022 - S3
Colour : Black
Sizes : 37-47
Type : Labour



Series Name : DEFENDER
Product Code : ADSh-JO-102-H/A & 101-L/A



Material : Leather Upper
Lining / Insole : High-Quality 3D Air Mesh
Toe Cap : Steel
Mid Sole : Steel
Sole : PU Injection Sole
Standard : CE EN ISO 20345:2022 - S3
Colour : Black
Sizes : 37-47
Type : Labour



Series Name : PROTEC
Product Code : APSH-JO-202-H/A & 201- L/A



Material : Leather Upper
Lining / Insole : High-Quality 3D Mesh
Toe Cap : Steel
Mid Sole : Steel
Sole : PU Sole
Standard : CE EN ISO 20345:2022 - S1P
Colour : Black
Sizes : 37-46
Type : Labour



Series Name : ECO
Product Code : AESH-JO-402-H/A & 401-L/A



Material : Leather Upper
Lining / Insole : High-Quality 3D Mesh
Toe Cap : Steel
Mid Sole : Steel
Sole : PU Injection Sole
Standard : CE EN ISO 20345:2022 - S1P
Colour : Black
Sizes : 38-46
Type : Labour



Casual Shoe

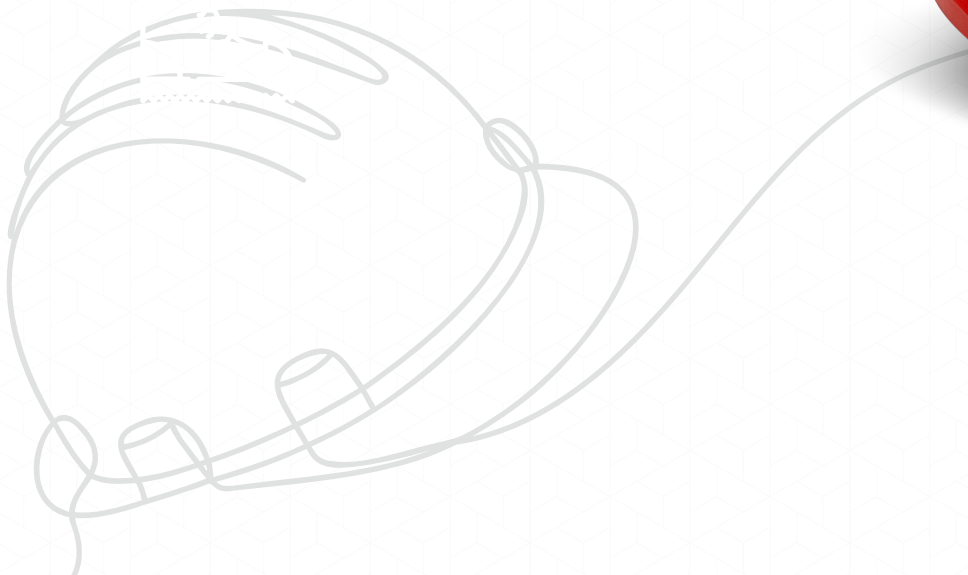
CLASSIC BKSH-JO-803



Material : Upper Nappa Leather
Lining / Insole : Leather Lining
Type : Slip Resistant

SAFETY HELMETS

A safety helmet, also known as a hard hat, is a form of protective headgear designed to prevent head injuries in various work environments, especially those that present risks of falling objects, impacts, or electrical hazards. These helmets are crucial in industries like construction, manufacturing, mining, and more, where workers are exposed to potential head injury risks. The comfort of a safety helmet is key to ensuring it is worn correctly. Helmets must be lightweight, breathable, and properly adjustable to suit the worker's head size. The interior suspension and padding help to distribute the weight evenly and cushion impacts, reducing discomfort during long working hours.



Series Name : SAFETY HELMET
Product Code : APHE-JE-031



Material : HDPE
Type : Push Lock
Standard : CE-EN 397:2012 , ANSI/ISEA Z 89.1-2014
Class : G



Series Name : SAFETY HELMET
Product Code : APHE-JE-032



Material : HDPE
Type : Ratchet
Standard : CE-EN 397:2012 , ANSI/ISEA Z 89.1-2014
Class : G



Available Colours



White



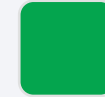
Blue



Yellow



Red



Green



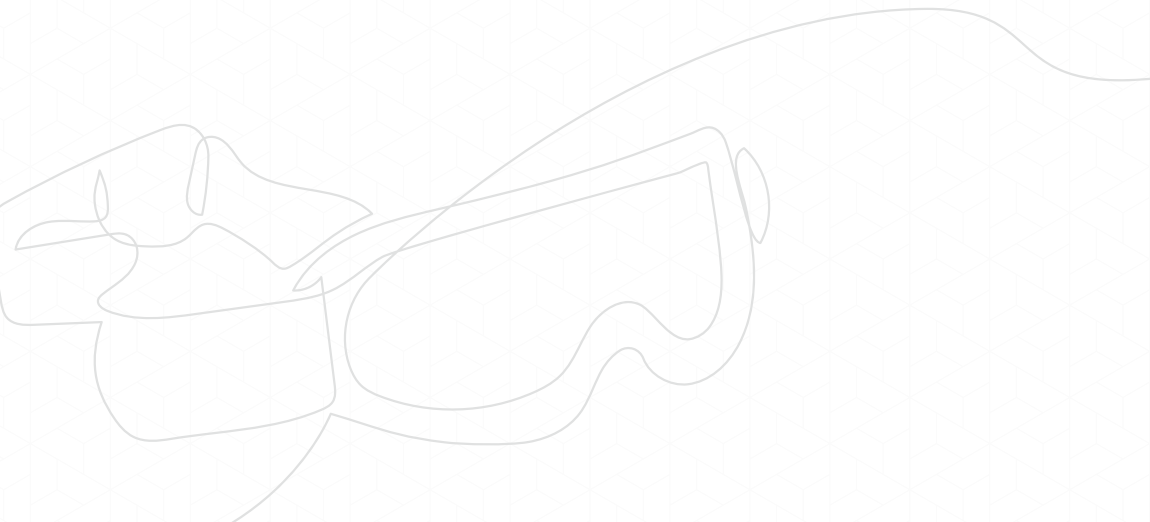
Orange

Features

- ☑ Made from strong, impact-resistant material HDPE (High-Density Polyethylene) to withstand impact and penetration.
- ☑ Inner foam liner or suspension system designed to absorb and dissipate impact energy, reducing the force transmitted to the wearer's head.
- ☑ Helmets designed for electrical work may feature non-conductive materials to protect against electrical hazards.
- ☑ Adjustable push lock system with 6point fabric suspension to ensure a snug & comfortable fit for different head sizes
- ☑ Adjustable ratchet system with fabric protection for comfort to ensure a snug & comfortable fit for different head sizes
- ☑ Secure strap system to keep the helmet firmly in place during work activities and potential accidents.
- ☑ Vents or breathable design to allow airflow and prevent overheating during extended wear.
- ☑ Designed to withstand rugged use and environmental conditions typical of industrial and construction sites.

SAFETY GOGGLES

Safety goggles are a type of protective eyewear designed to shield the eyes from potential hazards in various work environments, including chemicals, flying debris, dust, sparks, and intense light. They are crucial for protecting the eyes from injury, irritation, or infection while allowing the wearer to maintain clear vision in hazardous conditions. Safety goggles are commonly used in industries such as construction, manufacturing, laboratories, healthcare, and more.



Series Name : SAFETY GOGGLES
Product Code : CL-GG-MK-104
DK-GG-MK-105



Material : High-Quality (PC)
Lens & Nylon Frame
Colour of Lens : Clear & Dark
Standard : CE EN166
Weight : 32g

Series Name : SAFETY GOGGLES
Product Code : CL-GG-MK-204
DK-GG-MK-205



Material : High-Quality (PC)
Lens & Frame
Colour of Lens : Clear & Dark
Standard : CE EN166
Weight : 23g

Series Name : SAFETY GOGGLES
Product Code : CL-GG-MK-304
DK-GG-MK-305



Material : High-Quality (PC)
Lens & Nylon Frame
Colour of Lens : Clear & Dark
Standard : CE EN166
Weight : 32g

Series Name : SAFETY GOGGLES
Product Code : CL-GG-MK-404
DK-GG-MK-405



Material : High-Quality (PC) Lens
& Nylon/TPR Frame
Colour of Lens : Clear & Dark
Standard : CE EN166
Weight : 33g



SAFETY COVERALL

A safety coverall is a one-piece protective garment designed to provide full-body protection to workers in hazardous environments. These coveralls are commonly worn in industries such as construction, manufacturing, oil and gas, chemical processing, and healthcare, where there is a risk of exposure to physical, chemical, or biological hazards. They are designed to shield the body from contamination, extreme temperatures, and potential injury while allowing for comfort and mobility.



Series Name : FIRE RETARDANT COVERALL
Product Code : ACR-MA-FR280



Material : 100% Cotton
Thickness : 280GSM
Type : Fire Retardant
Sizes : S/M/L/XL/2XL/3XL/4XL/5XL
Standard : EN ISO 11611:2015 / EN ISO 11612:2015
Colour : Navy Blue, Red, Royal Blue



Series Name : COTTON COVERALL
Product Code : ACR-MA-FR240



Material : 100% Cotton
Thickness : 240GSM
Type : Standard Coverall
Sizes : S/M/L/XL/2XL/3XL/4XL/5XL
Standard : EN ISO 11611:2015 / EN ISO 11612:2015
Colour : Dark Grey, Light Blue, Navy Blue
Orange, Red, Khaki



Series Name : COMBED COTTON COVERALL
Product Code : ACR-MA-CC160



Material : Combed Cotton
Thickness : 160GSM
Type : 65:35 Combed Cotton
Sizes : S/M/L/XL/2XL/3XL/4XL/5XL
Standard : EN ISO 11611:2015 / EN ISO 11612:2015
Colour : Khaki, Light Blue, Navy Blue



Series Name : TWILL COTTON COVERALL

Product Code : ACR-MA-TC165



Material : Twill Cotton

Thickness : 185GSM

Type : Standard Coverall

Sizes : S/M/L/XL/2XL/3XL/4XL

Standard : EN ISO 11611:2015 / EN ISO 11612:2015

Colour : Light Blue, Navy Blue, Khaki



Series Name : TWILL COTTON JACKET & TROUSER

Product Code : AJT-MA-TC165



Material : Twill Cotton

Thickness : 185GSM

Type : Jacket + Trouser

Sizes : S/M/L/XL/2XL/3XL/4XL

Standard : EN ISO 11611:2015 / EN ISO 11612:2015

Colour : Light Blue, Navy Blue, Khaki



Series Name : COTTON JACKET & TROUSER

Product Code : AJT-MA-C240



Material : 100% Cotton

Thickness : 240GSM

Type : Jacket + Trouser

Sizes : S/M/L/XL/2XL/3XL/4XL/5XL

Standard : EN ISO 11611:2015 / EN ISO 11612:2015

Colour : Grey, Khaki, Light Blue, Navy Blue





Flame Retardant Coverall

A flame retardant coverall (also known as flame-resistant coverall) is a specialized protective garment designed to provide safety and protection to workers in environments where they are exposed to potential fire hazards, such as welding, electrical work, oil and gas industries, and industrial manufacturing. These coveralls are made from materials that are resistant to ignition and designed to minimize the spread of flames in the event of an accident.

■ Features:

- 100% Cotton Fabric
- 280 Gm Fabric Weight
- Self-Extinguishing
- Heat Protection
- Thermal Insulation
- Full Body Coverage
- High Collar
- Front Fastening
- Elasticated Waistband
- Reflective Tape
- Antistatic Properties

■ Certifications & Standards:

- ISO 11611:2015
- EN ISO 11612:2015

■ Describe Colours:



Navy Blue



Royal Blue



Red

■ Sizes:

Available In Various Sizes, Typically Ranging From Small To 5xl, Ensuring A Proper Fit For Workers Of Different Body Types.

SAFETY VEST

A safety vest is a type of high-visibility protective clothing worn to ensure that individuals are easily seen in potentially hazardous or low-light environments. Safety vests are an essential part of personal protective equipment (PPE) in industries like construction, roadwork, traffic control, and emergency services. They are designed to increase visibility and reduce the risk of accidents, especially in environments where workers may be in close proximity to moving vehicles, machinery, or heavy equipment.



Series Name : SAFETY VEST
Product Code : ASV-MA-400



Material : Polyester
Thickness : 120GSM
Type : Breathable Fabric at Front & Back
Sizes : M - 4XL
Standard : EN471 2003+AI:2007
Colour : Fluorescent Yellow
Category : Engineer, Supervisor



- EN 471 2003 + AI: 2007 Quality Standard
- 2 Inch - 360° Hi-Vis Reflective Tape
- PVC Transparent ID Badge Pocket
- 2 Big Pockets For Mobile and Tools
- Zipper Pocket With Dring
- High-Quality ABS Zipper For Easy Closure
- EN-Standard Fluorescent Color

Series Name : SAFETY VEST
Product Code : ASV-MA-300



Material : Polyester
Thickness : 120GSM
Type : Breathable Fabric At Front & Mesh At Back
Sizes : M - 4XL
Standard : EN471 2003+AI:2007
Colour : Fluorescent Yellow
Category : Engineer, Supervisor



- EN 471 2003 + AI: 2007 Quality Standard
- 2 Inch - 360° Hi-Vis Reflective Tape
- 2 Big Pockets For Mobile And Tools
- 2 Chest Pockets
- High-Quality Abs Zipper For Easy Closure
- 100% Breathable Polyester
- 120 GSM Fabric at Front - 120 GSM Mesh at Back
- EN-Standard Fluorescent Color

Series Name : SAFETY VEST
Product Code : ASV-MA-200



Material : Polyester
Thickness : 120GSM
Type : Breathable Fabric At Front & Mesh At Back
Sizes : M - 4XL
Standard : EN471 2003+AI:2007
Colour : Fluorescent Yellow
Category : Labour



- EN 471 2003 + AI: 2007 Quality Reflective for max reflection
- Enhanced visibility with 3-times Better Quality than others
- EN Standard-Fluorescent Colours
- 3 inch Adjustable Velcro Fasteners
- 120GSM Fabric at Front - 120GSM Mesh at Back
- Special Beading With Reflective Material



ESSENTIAL
SAFETY
ULTIMATE
COMFORT

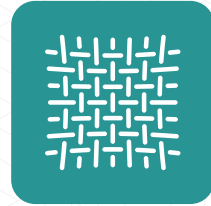
SHOES CARE - WE RECOMMEND



Reinforced area for
Extra safety



No Slip on style use



"Cement, Chemical,
Silica, Dirt, Mud, Acid,
Alkali Etc.
Deposited on the natural
leather damage.
Open-up the molding



Don't hit the shoe
on hard surface



Don't soak the shoe
in water



Periodic cleaning
will give maximum
comfort and
long life



Leather Need Care



Always Keep The
Insole
Clean And Dry

Shoe Measurement/Size Chart

System	Sizes (Sizes Available From 37 - 47)										
US	5	6	7	7.5	8	8.5	9	10	11	12	13
EU	37	38	39	40	41	42	43	44	45	46	47
UK	4	5	6	7	7.5	8	9	10	10.5	11	12



✉ info@armexsafety.com ☎ +971 4 267 8714

Corporate office, YK Al Moayyed Building, DIP 2, Dubai, UAE

Exclusive Distributors in GCC



Raiz Electrical LLC,
YK Al Moayyed Building,
DIP 2, Dubai, UAE
✉ uae@armexsafety.com



Al Shams Safety solutions LLC
Muscat, Sultanate of Oman
✉ oman@armexsafety.com



Al Shams Electricals &
Accessories Trading W.L.L,
P.O. Box: 40567, Building No 4, Shop 10,
Barwa Village, Doha, Qatar
✉ qatar@armexsafety.com



Sama Al Sabah Trading
Building No 7869,
Sulayman Aal Ghaihab Street,
Al Sulay District, Riyadh, Saudi Arabia
✉ ksa@armexsafety.com